

Concours de Cor – 3ème Cor jouant le 1^{er} Cor

1^{er} tour éliminatoire : Pièce imposée + Trait d'orchestre (au choix du jury)

MOZART W.A. : *Concerto pour Cor N°4 KV 495* - 1^{er} Mvt (sans cadence).

2ème tour éliminatoire : Pièce imposée + Trait d'orchestre (au choix du jury)

STRAUSS R. : *Concerto pour Cor N°1* - 1^{er} Mvt

3ème tour éliminatoire : Traits d'Orchestre

Liste des Traits d'Orchestre

- BEETHOVEN L.V. :

- *Symphonie N°8* – 3ème Mvt avec reprise

- BERLIOZ H. :

- *Roméo et Juliette* - La Reine Mab où la Fée des Songes (Cor en Lab)

- BRAHMS J. :

- *Concerto pour piano N°1* - 1^{er} Mvt
- *Concerto pour piano N°2* - 1^{er} Mvt

- CHOSTAKOVITCH D. :

- *Concerto pour Violoncelle N°1* - 1^{er} Mvt. Extrait N°1
Extrait N°2

- DEBUSSY C. :

- *La Mer* - 1^{er} Mvt

- RAVEL M. :

- *Pavane pour une Infante Défunte* – Cor en Sol

- ROSSINI G. :

- *Le Barbier de Séville* – Ouverture. Extrait N°1 (Cor en Mi)
Extrait N°2 (Cor en Sol)
- *L'Italienne à Alger* - Extrait N°1 (Cor en Mib)
Extrait N°2 (cor en Mib)

- SAINT-SAËNS C. :

- *Symphonie N°3* - 1^{er} Mvt. Extrait N°1
Extrait N°2
Extrait N°3

- STRAUSS R. :

- *Till L'Espiègle*. Extrait N°1 (Cor en Ré)
Extrait N°2 (Cor en Fa)
Extrait N°3 (Cor en Fa)

- TCHAIKOVSKI P.I. :

- *Symphonie N°4 – 1^{er} Mvt*

- VERDI G. :

- *Don Carlo – Prélude* (cor en Mi)

- WAGNER R. :

- *Tannhäuser – Ouverture*. Extrait N°1 (Cor en Mi)
Extrait N°2 (Cor en Mi)

BEETHOVEN - Symphonie N°8

in F
Tempo di Menuetto ♩ = 128

The image shows a musical score for the Corno I (Horn I) part, Solo section, measures 51 to 70. The score is written on three staves. The first staff (measures 51-55) is for the Corno I, starting with a 'Solo' marking and a 'dolce' dynamic. The second staff (measures 51-70) is for Violin I, starting with a 'f' dynamic. The third staff (measures 51-70) is for Clarinet I, starting with a 'p' dynamic. The score includes various dynamics such as *cresc.*, *p*, *f*, *pp*, and *dim.*, as well as performance instructions like 'Men. Da capo al Fine'. The tempo is marked 'Tempo di Menuetto' with a quarter note equal to 128 beats per minute. The key signature is one flat (F major/D minor).

Solo
dolce
cresc. p

Viol. I.

f *p dolce cresc.* *p* *cresc.* *p* *cresc.* *p* *cresc.* *pp* *Men. Da capo al Fine*

51 60 70

4

La Reine Mab ou la Fée des Songes.

a. d. dramatischen Symphonie „Romeo et Juliette“

H. Berlioz.

COR 3

Marseille

Cor. III
in As.

Cor. IV
in Es.

Cor. I.
in F.

Cor. II.
in C.

Marseille
Cor. III.
in As.

Cor. IV.
in Es.

Marseille

Musical score for Cor. III and Cor. IV in Marseille, measures 10-14. The score is written for four staves. The first two staves are for Cor. III in As. and Cor. IV in Es. The last two staves are for Cor. III in As. and Cor. IV in Es. The score includes dynamic markings such as *p*, *pp*, and *f*, and articulation markings such as accents and slurs. The number 10 is written above the first measure of the bottom two staves. The score ends with a double bar line and a fermata.

BRAHMS, Concerto pour piano N° 1: 1er mouvement

Maestoso
(en FA) (Solo) *p marc. ma dolce*

199

208

Horn IV (Solo) *p marc. ma dolce*

214

BRAHMS, Concerto pour piano N° 2: 1er mouvement

Poco più moderato
(en FA) (Solo) *p* Solo Tutti *p* Solo Tutti *p*

195

Corno (F)

Concerto n°1 pour violoncelle, op. 107

I

Dimitri Chostakovitch

133 15

140

ff

265 31

271

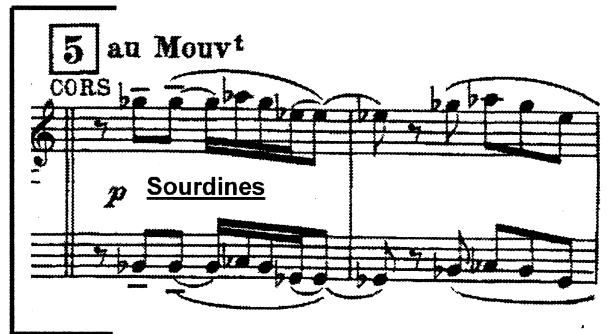
276 32

Claude Debussy
La Mer

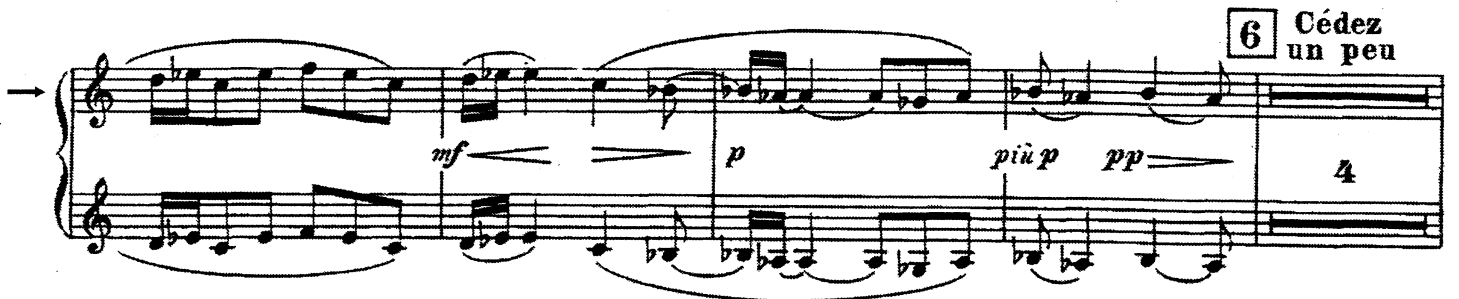
3^e et 4^e CORS (chromatiques)

N^o 1. De l'aube à midi sur la mer

5 au Mouvt
CORS
p Sourdines



6 Cédez un peu



7 au Mouvt

ôtez les sourdines



8

mf très soutenu

p cresc. marqué

mf



p



RAVEL: Pavane pour une infante défunte

Cors simples en Sol

Lent $\text{♩} = 54$

SOLO

1^{er} Cor.
2^d Cor.

pp

This system shows the first two staves of the score. The first staff is for the 1st Horn and the second for the 2nd Horn. Both parts begin with a *pp* dynamic. The 1st Horn part features a melodic line with eighth-note patterns, while the 2nd Horn part provides a harmonic accompaniment with sustained notes.

Cédez

p — *pp* *expressif*

Ⓐ

This system continues the musical notation. It includes the instruction "Cédez" above the staff. A dynamic marking *p* is followed by a hairpin indicating a decrease to *pp*, which is then labeled "expressif". A circled letter "A" is placed above the staff to indicate a first ending or a specific performance instruction.

En élargissant

This system shows the final part of the score, marked "En élargissant" (ritardando). The notation continues with the same melodic and harmonic lines as the previous systems, ending with a final note.

CORNO 1° E 2°

IL BARBIERE DI SIVIGLIA
G. ROSSINI

SINFONIA

Rev.A.Zedda

Cor en Mi

Musical score for Horn in E, measures 1-7. The score is enclosed in a box with an arrow pointing to it from the left. It features a treble clef and a key signature of one sharp (F#). The music is marked "Solo" and "mf" (mezzo-forte). A trill (tr.) is indicated above the final note of the first phrase. A first ending bracket labeled "1" spans the final two measures. The dynamics change to "mf rinf." (mezzo-forte rinforzando) for the second phrase. The bass line consists of a few notes in the lower register.

Musical score for Horn in E, measures 8-11. The score is enclosed in a box with an arrow pointing to it from the left. It features a treble clef and a key signature of one sharp (F#). The music is marked "Solo" and "p" (piano). A second ending bracket labeled "8" spans the first two measures, with the instruction "In Sol" written below it. The dynamics change to "dolce" (dolce) for the third measure. The music concludes with a fermata. The bass line is mostly empty.

Musical score for Horn in E, measures 12-15. The score is enclosed in a box with an arrow pointing to it from the left. It features a treble clef and a key signature of one sharp (F#). The music is marked "p" (piano). The melody is a continuous eighth-note pattern. The bass line consists of a few notes in the lower register.

ROSSINI : L'Italienne à Alger

8

CORNO I.

N. 2

CAVATINA

Musical score for Corno I, Cavatina, measures 1-13. The score is written in treble clef with a key signature of one sharp (F#) and a 3/4 time signature. It begins with a box containing the instruction *Vib* and *Andante*. The first measure is marked *p* and includes a *Solo* marking. The melody features a series of eighth notes and quarter notes, with a fermata over the eighth measure. The piece concludes with a *Tram* marking and a *p* dynamic. Measure numbers 1, 3, 5, 7, 9, 11, and 13 are indicated.

Cor en Mib

Musical score for Cor en Mib, measures 12-18. The score is written in treble clef with a key signature of one sharp (F#) and a 3/4 time signature. It begins with a box containing the instruction *Solo* and a measure number of 17. The first measure is marked *p*. The melody consists of eighth notes and quarter notes, with a fermata over the eighth measure. The piece concludes with a *Solo* marking and a *p* dynamic. Measure numbers 12, 17, and 18 are indicated.

Saint-Saens — Symphony No. 3 in C Minor

3^e COR (chromatique) en FA

Q 3^e Cor
p

poco cresc.

p

This system contains three staves of music. The top staff is a short phrase in treble clef, marked with a 'Q' and '3^e Cor', starting with a piano (*p*) dynamic. The middle staff continues the melody with a *poco cresc.* marking and ends with a piano (*p*) dynamic. The bottom staff is a short phrase in treble clef, enclosed in a bracket on the right.

3^e Cor
p

S

pp

This system contains two staves of music. The top staff is a short phrase in treble clef, marked with '3^e Cor' and starting with a piano (*p*) dynamic. The bottom staff continues the melody, marked with an 'S' and ending with a pianissimo (*pp*) dynamic. The staff is enclosed in a bracket on the right.

3^e Cor
p

pp

This system contains two staves of music. The top staff is a short phrase in treble clef, marked with '3^e Cor' and starting with a piano (*p*) dynamic. The bottom staff continues the melody, ending with a pianissimo (*pp*) dynamic. The staff is enclosed in a bracket on the right.

Till Eulenspiegels lustige Streiche.

Richard Strauss, Op.

Horn III

Volles Zeitmass.

in D.



Cor en Fa

37 rausgelassener und lebhafter



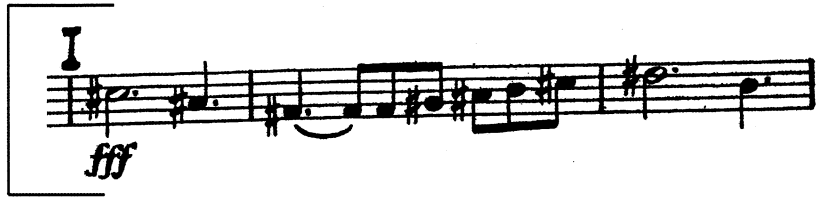
Vierte Symphonie

Horn 3 in F

I



Peter Tschaikowsky, op. 36



COR II

DON CARLO (Preludio) di G. VERDI

Andante

(In MI)

TANNHÄUSER

OUVERTURE

RICHARD WAGNER

3^e COR Chromatique en MI = 1^{er} Ventilhörner

And^{te} maestoso (♩ = 50)

p tenuto molto

p

Cor en Mi

F Molto vivace *ff*

ff

ff

ff

ff